

IOU PROGRAMS & RESOURCES

Independent Cities Association

June 24, 2016



Overview

- **Energy Efficiency & Financing Programs:**
 - Energy-Efficiency Rebates & Incentives
 - Zero Interest On-Bill Financing
- **Other Programs:**
 - Customer Assistance Programs
 - Transportation Programs
- **Resources:**
 - Energy Data
 - Resource Centers (training and education)
 - Who to Contact?

Energy Efficiency Rebate Programs

- Energy Efficiency programs are designed to help Residential and Business customers save energy, save money and help the environment.
- These Statewide Energy-Efficiency programs are funded by California utility customers through the Public Purpose Program Surcharge (PPPS) found on your utility bill. They are administered by the state's investor-owned utilities, under the auspices of the California Public Utilities Commission.
- The following Utilities participate in these programs:
 - Southern California Gas Company (gas utility) - SoCalGas
 - Southern California Edison Company® (electric utility)- SCE
 - Pacific Gas and Electric Company® (electric and gas utility)- PG&E
 - San Diego Gas and Electric ® (electric and gas utility)- SDG&E
- Always check with water providers and/ or your local municipal-owned utilities for additional rebates on energy-efficiency and conservation.

Energy Efficiency Rebate Programs

What are rebates (express)?

- Rebates are money that you **receive after** you've upgraded to new, energy-saving products. They are a fast and easy way to get cash back for your business. If you've recently bought a piece of equipment or a new appliance, you could be eligible for a rebate.
- Instant rebates for Residential customers can also be obtained at participating Retailers/ Home appliance stores, Regional Energy Networks, Energy Upgrade California ® Home Upgrade program or through Manufacturer/ Distributor programs.
- Products and appliances must be energy-efficient and are subject to Energy Efficiency & Water Factor/Ratios specifications and Energy Star ® ratings.

What are incentives (calculated)?

- Incentives are for pre-approved projects that retrofit or install new energy efficient equipment to save energy. Your incentive amount is **calculated** by the amount of energy the project saves. The more you save, the more money you'll earn. You'll need to **pre-qualify with us** before you begin removal of existing and installation new equipment.



Energy Efficiency Incentive Programs

Deemed Rebates (Express)

Residential: Single Family & Multifamily

- *Variable speed pool pumps*
- *Air conditioning*
- *Evaporative cooling system*
- *Refrigerators*

Business: Commercial, Industrial, Agriculture and Local Govts.

- *Cooking equipment*
- *Refrigerated display case lighting*
- *LED Street Lights*
- *Plug load occupancy sensors*
- *Advanced evaporative coolers*

Customized Incentives (Calculated)

- Incentives - based on type of measure installed, the kWh saved, and kW reduced over a 12 month period.
- Benefits - receive up to 50% of the project cost
- Limitations – project must qualify for an incentive of \$2200 or greater
 - Learn more about **Customized Incentives for Energy Efficiency** at www.sce.com



New Construction

- Savings By Design (SBD)
- Savings By Design is a program that gives incentives for new buildings that exceed Title 24
- Owner Incentives
 - Whole Building Incentives
 - Systems Approach Incentive
- Design Team Incentives
 - The Design Team qualifies for incentives when the building design saves at least 10%
- Design Assistance
- Energy Design Resources

Energy Efficiency Incentive Programs

SoCalGas:

Deemed Rebates (Express)

Residential: Single Family & Multifamily

- *Storage Water Heaters*
- *Clothes Washers/ Dryers*
- *Attic/Wall Insulation*
- *Natural Gas Furnaces*
- *Tankless Water Heaters and more*

Business: Commercial, Industrial, Agriculture and Local Govts.

- *Pipe/Tank Insulation*
- *Space Heating Boilers and Water Heaters*
- *Pool Covers*
- *Pre-rinse spray Valves*
- *An array of Foodservice equipment*

Customized Incentives (Calculated)

Incentives are **\$1.00 per therm saved**, up to **\$1,000,000** per project, and up to **\$2,000,000** per premise per year or **50 %** of the project cost

Qualifying projects include:

- *New Energy Efficient equipment replacements*
- *Process improvement projects*
- *New construction (utilizing Savings By Design)*



Financing Options: On-Bill Financing

Interest-free, On-Bill financing for installation of energy-efficiency measures covered by the IOU rebate/incentive programs.

Project:

- ✓ Must qualify for a utility rebate/incentive program (commercial, industrial, taxpayer-funded, and non-owner occupied Multifamily housing).
- ✓ Ratepayer-funded sustainable revolving loan pool.
- ✓ Loan term is tied to the payback period of the project.
- ✓ Customers can receive both an OBF loan and a rebate or an incentive.

Credit:

- ✓ Applicant's account must be in good standing.
- ✓ Applicant must be a customer of the utility (active account) for at least 24 months in the same business, with at least 12 months of energy usage data at the current location.

Other Requirements:

- ✓ Energy audit; pre-/post-inspection.
- ✓ Loan is non-transferable.
- ✓ Loan Default will result in Meter shut-off.

Financing Options: On-Bill Financing

Loan Benefits:

0% interest, unsecured, non-transferable.
Energy savings of project covers the loan installment.
Monthly loan payment is included on the utility bill.

Loan Amounts:

\$5,000 to \$100,000 per meter for NON-INSTITUTIONAL customers.
\$5,000 to \$250,000 (\$1,000,000 for SCE customers) per meter for INSTITUTIONAL customers (taxpayer-funded institutions such as counties, cities, school districts)
Eligible **State of California** accounts may qualify for up to \$1,000,000*

Loan Term:

Loan term is tied back to the payback period; 10 years or useful equipment life (whichever is shorter) for local government institutions, including State of California accounts.
Five years or useful equipment life (whichever is shorter) for all other businesses.

*Southern California Gas Co

Other IOU Programs/Resources to Support with EE/Sustainability Implementation



Customer Assistance Programs: Income-Qualified



California Alternate Rates for Energy (CARE)

The CARE program provides a **discount** on the monthly bill for eligible households. In addition, for those who qualify, and are approved within 90 days of starting new service may also receive a discount on the Service Establishment Charge.

Energy Savings Assistance Program

Offers no-cost energy-saving **home improvements** and furnace repair or replacement services for income-qualified renters and homeowners.

Gas Assistance Fund (GAF)/Energy Assistance Fund (EAF)

Is a **voluntary** effort to help customers respond to financial emergencies. This program is supported by **generous donations** from employees, shareholders and customers. Rates are not affected by the funds matched by the company.

Medical Baseline

If someone in your household has a **life-threatening illness**, is seriously **disabled**, or requires more energy to a serious health condition, you may qualify for additional **savings**.

California Solar Initiative (CSI): Thermal Solar Water Heating



The CSI-Thermal Program offers cash rebates to SoCalGas customers who purchase and install qualifying solar water heating systems in the following categories:

- Single-family homeowners
- Multi-family dwelling owners and/or property managers
- Commercial & Industrial customers



Benefits

Solar water heating can have a number of benefits, including:

- Reducing the amount of energy used to heat your water
- Lowering the cost of heating your water
- Reduction of harmful greenhouse gas emissions

Rebates

- Single-family residential customers max rebate is \$2,719
- Multi-family dwelling and commercial customers can receive rebates of up to \$500,000

Applications must be completed online at
csithermal.com

SCE Green Rate & Community Renewables Program



Green Rate Program

- Customers Opt-In to 50% or 100% Options
- Average premium \$3.5 cents/kWh Residential & 3.25 cents/kwh Commercial
- De-Enroll at Any time

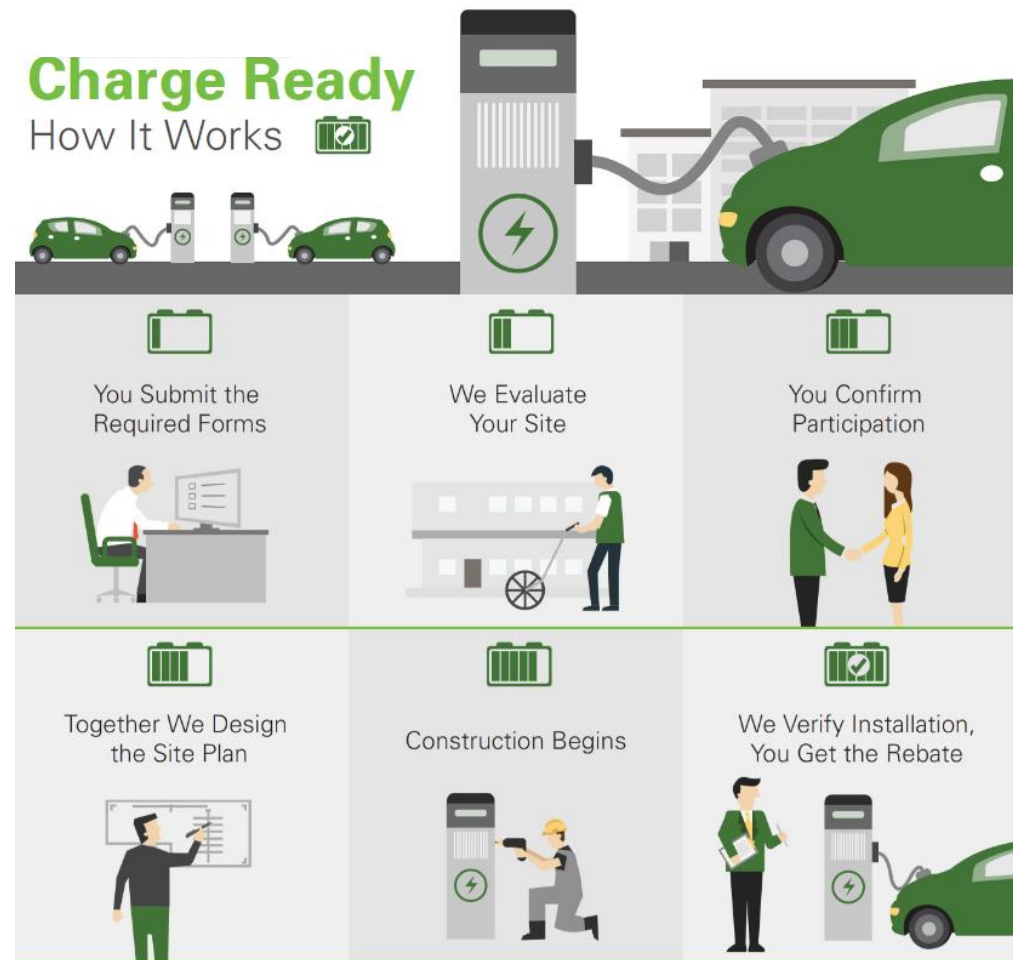
Community Renewables Program

- Customer will enter into an agreement with a 3rd party in their community
- SCE will purchase the electricity from the developer and provide customers with bill credits

SCE Charge Ready: Electric Vehicle Charger Program



- Installation of electric vehicle chargers at long dwell public locations
 - Workplaces, fleet, multi-unit dwellings, and other destination centers, such as sports venues or hotels
- The program covers all electric infrastructure costs related to the new circuit.
- SCE also offer rebates to offset some or all of the costs for the charging stations and their installation.



For more information, visit
[sce.com/chargeready](https://www.sce.com/chargeready)

Natural Gas for Vehicles: Part of the Clean Transportation Solution



Natural Gas Vehicles



- Provide a cleaner, more affordable and abundant transportation fuel source.
- NGVs produce 20-30% fewer greenhouse gas emissions than gasoline.
- CNG costs 40 -50% less than gasoline or diesel.
- Produced here in North America – better for the U.S. economy.

Home Refueling

- Home Refueling appliances for NGVs are available now.
- They can be installed inside or outside your garage using existing natural gas and electrical supply.
- Refuels your natural gas vehicle overnight.
- You save with the G-NGVR “Residential Rate.”



For more information, visit socalgas.com/ngv

Energy Data

Green Button:

Download My Data:

Allows customers to download their 15-min energy usage data

May be downloaded at SCE.com my account

Connect My Data:

Allows for customers to transfer their data to a registered 3rd party

Data includes energy usage and billing data

Energy Data Request Program:

The Third Party Energy Data Request Program is a new offering which provides access to energy usage and usage related data to eligible Third Parties (e.g. local government entities, academic researchers, and state/federal agencies).

Allows eligible third parties to request aggregated or anonymized data that meet the CPUC Decision (D. 14-05-016) that established the data access rules
Also provides quarterly zip code level aggregated energy usage data broken out by residential, commercial, and industrial sectors

Resource Centers

Resource Centers:

Take advantage of the many **seminars** and **training** opportunities at the Energy Centers. They offer a variety of technical training for customers, and many seminars at no-cost.

IOU Resource Center Locations:

SoCalGas Energy Resource Center

Downey, CA – socalgas.com/innovation/fsec

SCE Energy Education Center

Irwindale, CA & Tulare, CA – sce.com/workshops



Next Steps

- Consult the Energy portion of your Climate Action Plan to identify opportunities to save energy with support from utilities.
- Review your goals to help identify Energy Efficiency projects with your SCE and SoCalGas representatives.
 - Remember you're not alone. We have Rebates, Incentives, and some projects may also qualify for Zero interest On Bill Financing (OBF).
 - We also have experts in NGV and EV transportation that can assist.
- **Do not issue Purchase Orders** until you discuss potential projects with SCE and SoCalGas. This may disqualify you from receiving Incentives and possibly OBF.
- Make sure you are taking advantage of Cap and Trade funds which may be qualify to receive.

Resources

The following resources are also available:

Partnership Program Managers
Account Executives
Public Affairs Managers

SCE.com
SoCalGas.com

